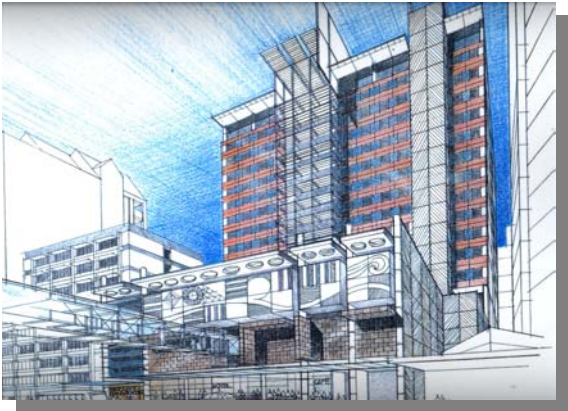


**Woods Glass  
Job of the Month  
November 2003**



Left:  
Artist's impression

The curtainwall chosen for this project is Thermosash's unitised panelwall system with an integrated feature terracotta tile spandrel sourced from Europe. This total-clad solution was selected in preference to a typical structural spandrel and strip window system due to the speed of installation and the integrated weathering solution a unitised curtainwall system provides. The terracotta tiles also provide a cost saving against the more traditional granite stone option. Approximately 56 tonnes of "Tuscany Red" terracotta tiles measuring 200mm by 400mm are being installed on Auckland's new 24 storey Sky City Hotel on Albert Street, linked to the Sky City Casino.



Left:  
October 2003

Architect:  
Craig Craig Moller Limited

Main Contractor:  
The Fletcher Construction Company Limited

Curtainwall façade  
Thermosash Commercial Limited

Glass/glazing:  
Woods Glass (New Zealand) Limited

For your ♦ glass maintenance/inspection work ♦ total vision systems ♦ commercial glazing and re-glazing ♦ structural silicone glazing ♦ internal glass partitions ♦ Grade "A" laminated glass ♦ mirrors, contact the professionals:-

**WOODS GLASS (NEW ZEALAND) LIMITED**



**AUCKLAND** HEAD OFFICE AND FACTORY: 17 OLIVE ROAD, PENROSE, AUCKLAND  
PHONE: 09-525 3379 FAX: 09-525 8200 email: sales@woodsglass.co.nz

**WELLINGTON** OFFICE AND FACTORY: 17 - 19 MARINE PDE, PETONE, WELLINGTON  
PHONE/FAX: 04-939 0044 email: sales@woodsglass.co.nz

[www.woodsglass.co.nz](http://www.woodsglass.co.nz)

**SKY CITY CONVENTION CENTRE, AUCKLAND**